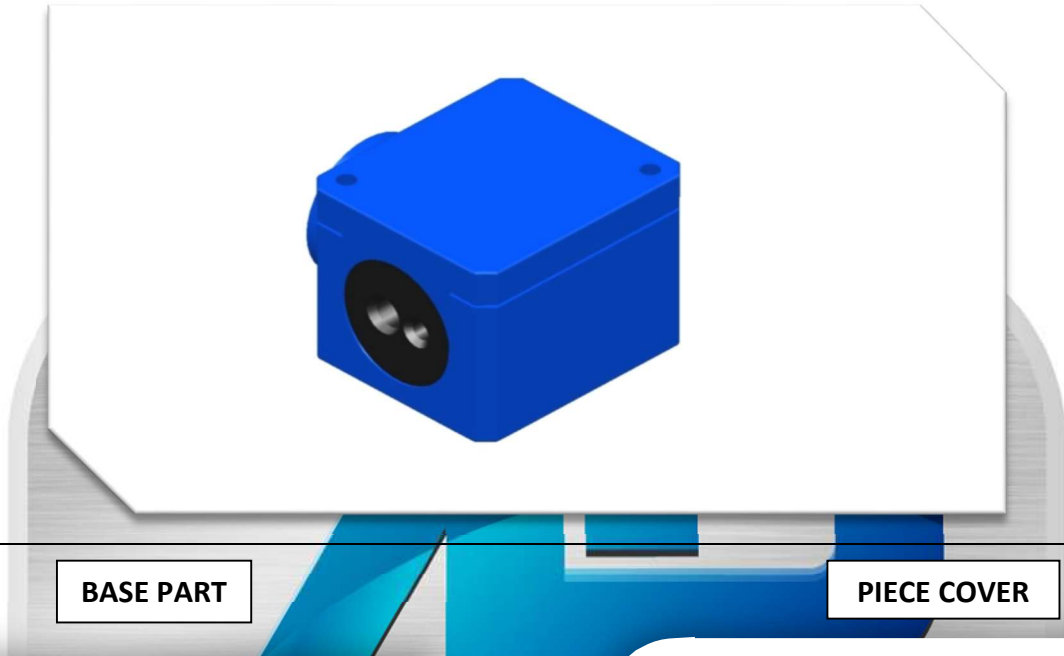


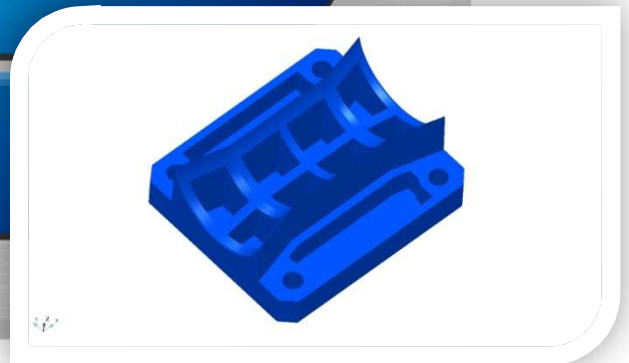
# Alfem Telecom

FDS DOUBLE SQUARE DIELECTRIC SUPORT, SINGLE OR MIXED



BASE PART

PIECE COVER



## ALFEM PLASTIC



DIELECTRIC  
RUBBERIZED  
CUSHIONS

ISSUE: TECHNICAL MANAGEMENT OF ALFEM TELECOM PRODUCTS

MARCH / 2018

ELABORATED: LUIS RICARDO COSTA

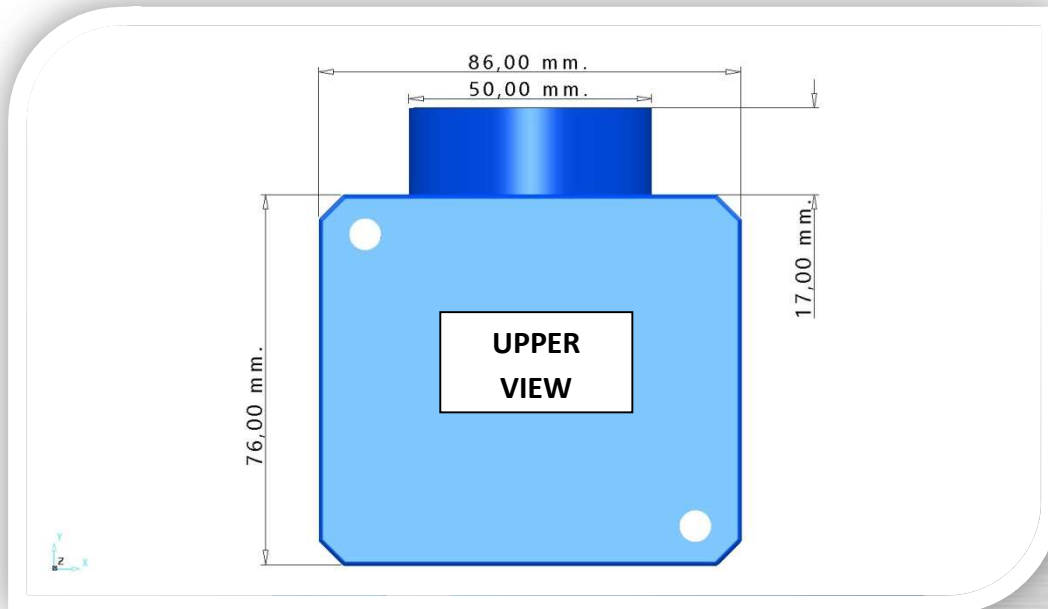
APPROVED: ANTONIO COSTA / FERNANDO RICARDO

VALIDATED:

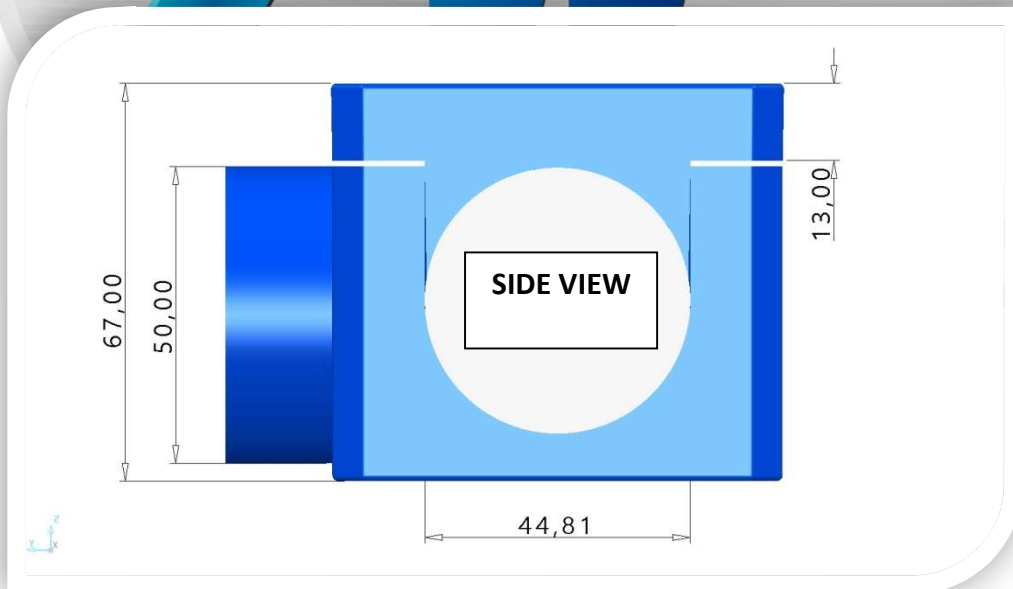


# Alfem Telecom

SINGLE, DOUBLE OR MIXED SQUARE DIELECTRIC FDS BRACKET



TOLERANCE:  
+/- 1,00 mm.



TOLERANCE:  
+/- 1,00 mm.

## ISSUE: TECHNICAL MANAGEMENT OF ALFEM TELECOM PRODUCTS

MARCH / 2018

ELABORATED: LUIS RICARDO COSTA

APPROVED: ANTONIO COSTA / FERNANDO RICARDO

VALIDATED:



# Alfem Telecom

## SINGLE, DOUBLE OR MIXED SQUARE DIELECTRIC FDS BRACKET

### APPLICATION:

The FDS Bracket is used to support 1 or 2 optical cables **FROM 6 to 12 mm.** without causing damage to the cable cover so that it does not transfer tensile or twisting efforts to the optical fibers. Installed at points with angles of less than 10°.

### MATERIAL:

The FDS Support consists of 4 types of materials:

- 1º - Base: Made through the injection of thermo-plastic of high resistance.
- 2º - Lid: Also made through injection of thermo-plastic of high resistance.
- 3º - Cushion: Industrialized by injection with a rubberized and dielectric elastomer in which it surrounds the fibers so that it minimizes damage and tensile and twisting forces that the optical fibers suffer.
- 4º - Screws: Screws are used to fix the lid on the base in order to attach enough for the fixation of the fibers in the Support consequently in the post.

### PACKING:

Packed in cardboard boxes with 20 units.

### MATERIAL:

**Plastic termo:** Polypropylene body in the color of the OPERATOR OR CUSTOMER, with the appropriate additives, of mechanical reinforcement, and should not occur sliding or deformation with traction less than 60 kgf. It must be weather resistant, the use of recycled materials is allowed, and must be manufactured with virgin raw material with the appropriate additives.


### MATERIAL CODE:

CODE 005 – SUPPORT FDS SQUARE SINGLE, DOUBLE OR MIXED.

### BRAND:

- 1º -In relief the name / brand of the manufacturer;
- 2º -Batch code or date of manufacture;
- 3º -Logo of the OPERATOR.

### ISSUE: TECHNICAL MANAGEMENT OF ALFEM TELECOM PRODUCTS

MARCH / 2018	ELABORATED: LUIS RICARDO COSTA	 ALFEM PLASTIC
	APPROVED: ANTONIO COSTA / FERNANDO RICARDO	
	VALIDATED:	